

4x2

4x3m=12m joists
22x2.5m=55m rafters
Total 67m.

6x2

1 off 5.65m ridge

6x1

4 off 2.5m barge boards=10m
2 off 5.65m guttering= 11.3m
Total 21.3m

Cladding

75 sq metres shiplap

3x2

22 off 1.645m=36.19m
2 off 5.45m sole plates 10.9m
2 off 5.65m eave plates 11.3m
37.5m general studwork
Total: 95.89m

Battening 1x0.5

22 x 5.65m
Total 125m

Pantiles

27.25 sq metres of tiles at 16 per sq metre
Total 436 tiles (450)

Ballast

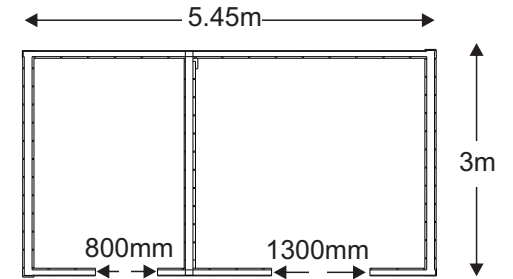
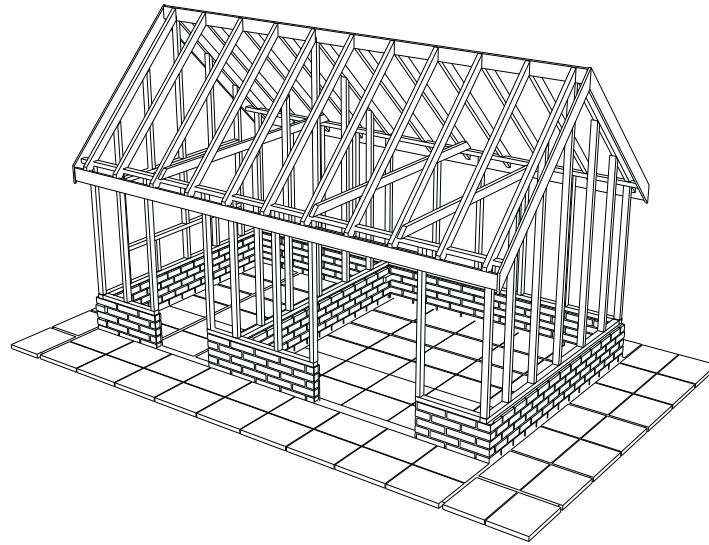
1 tonne bag

Sharp sand

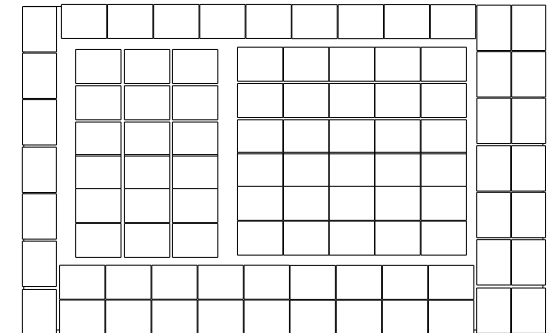
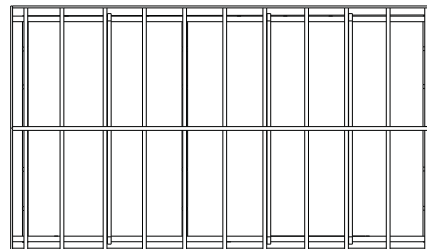
2 tonne bags

Bricks

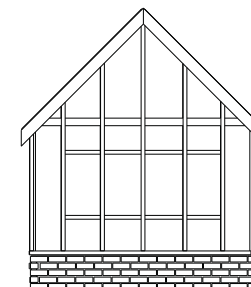
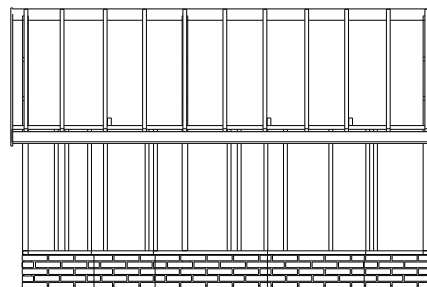
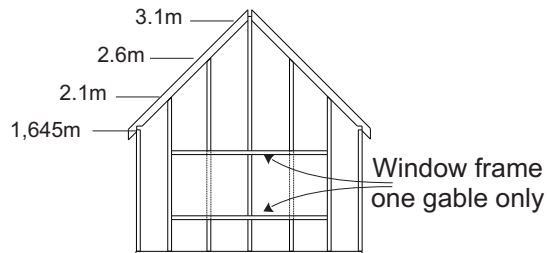
800 off Ibstock 'Ivanhoe'



179 meters of brickwork in 5 single courses, tie bonded throughout = 800 bricks (Ibstock ivanhoe burnt)



96 paving slabs
600mm x 450mm



Gable frames 3 off, two to dotted
general construction 3x2 (75mm x 50mm)
Rafters 4x2 (100mm x 50mm)

Garden Shed
Scale 1:100